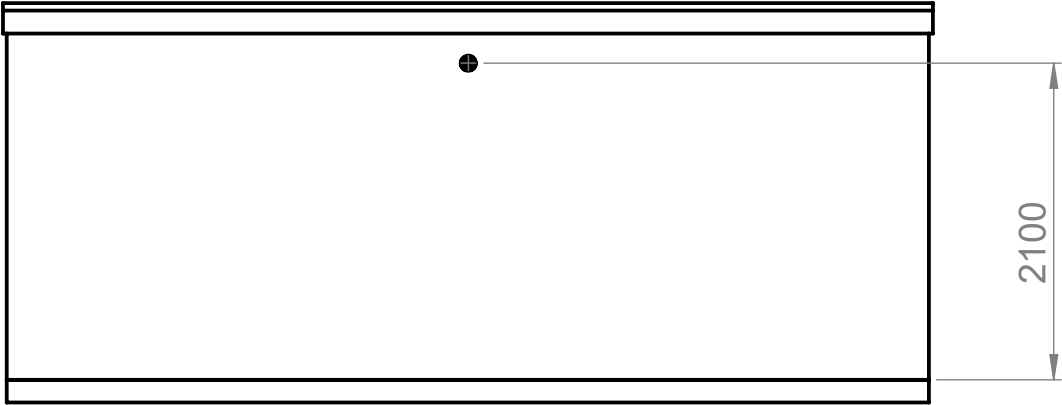
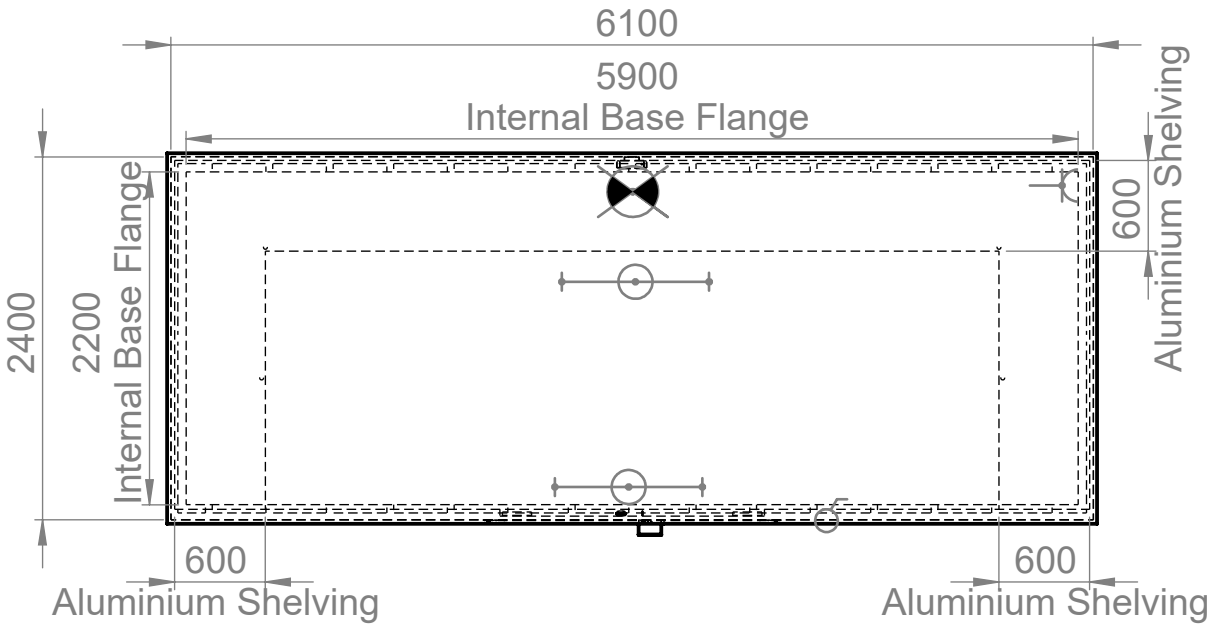


SYMBOL	DESCRIPTION	QUANTITY
	LIGHTS C/W SMASH GUARD AND MOISTURE PROOF WIRING	2
	LIGHT SWITCH	1
	4" EXTRACTOR FAN 150CFM TO RUN 24/7 FROM LIGHTING CIRCUIT	1
	16 AMP COMMANDO SOCKET TO ALLOW FOR EXTERNAL POWER SUPPLY	1

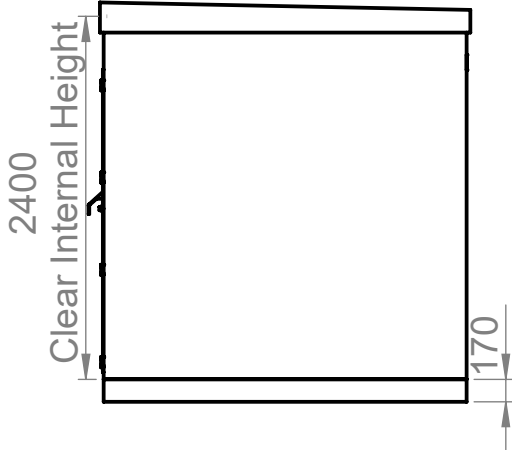
REAR VIEW



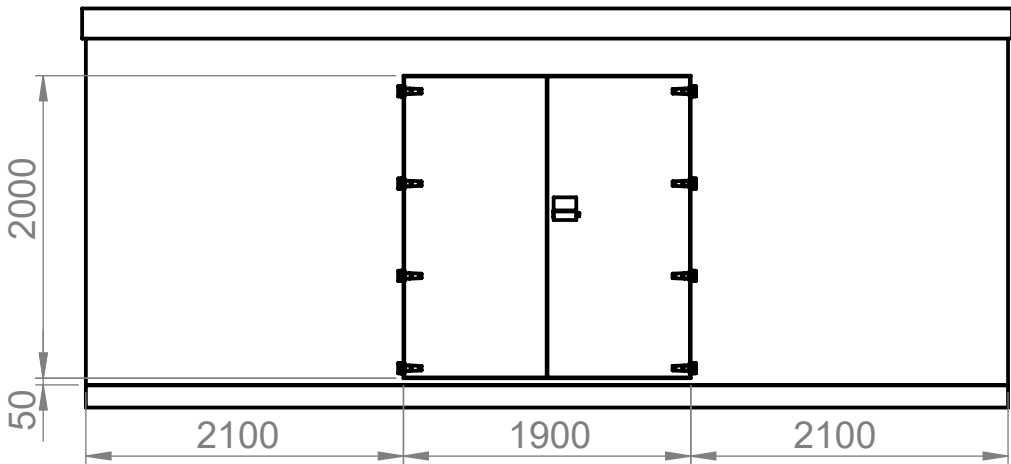
PLAN VIEW



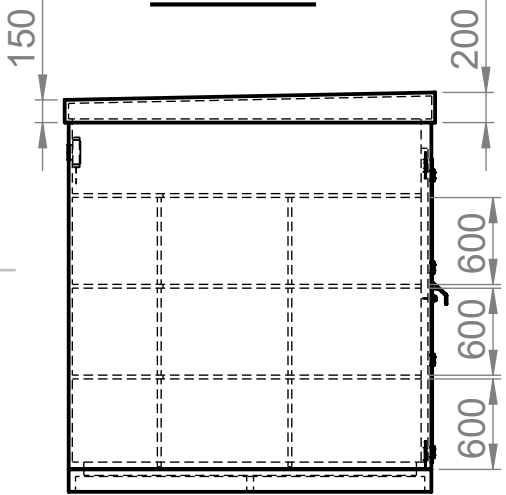
R/H VIEW



FRONT VIEW



L/H VIEW



DO NOT SCALE DRAWING
IF IN DOUBT ASK

GENERAL DRAWING NOTES

GRP Kiosk:

Dimensions
6100mm x 2400mm x 2400mmHigh
The height is the clear internal height. The internal height will be reduced if the kiosk is mounted on a stepped concrete base. All other dimensions are external.

Construction
Monolith
All round base flange to allow bolting down, no integral floor.
Ply / GRP composite. Wall 18mm Ply, Roof 12mm ply.
External resins to BS476 Part 7: Class 2 (surface spread of flame) to provide self extinguishing laminates.
"U" value is no more than 1.5W/m2°c
Lifting lugs
Aluminium 600mm deep shelving
GRP Base c/w GRP Grating

Finish
External standard texture finish.
External Colour: TBC
Internal GRP white BS4800 - 00/E/55.

Access
Double Door 1900mm x 2000mmH
Aluminium door trim surround
Door stay
ST/ST Hinges
3 way locking inc st/st padlockable handle
ST/ST Shroud

JOB REF		CLEARWATER	
UNLESS OTHERWISE SPECIFIED: DIMENSIONS ARE IN MILLIMETERS SURFACE FINISH: TOLERANCES: LINEAR: ANGULAR:		DEBURR AND BREAK SHARP EDGES	

WEIGHT APPROX - 1250KG

MATERIAL	REVISION
----------	----------

TITLE

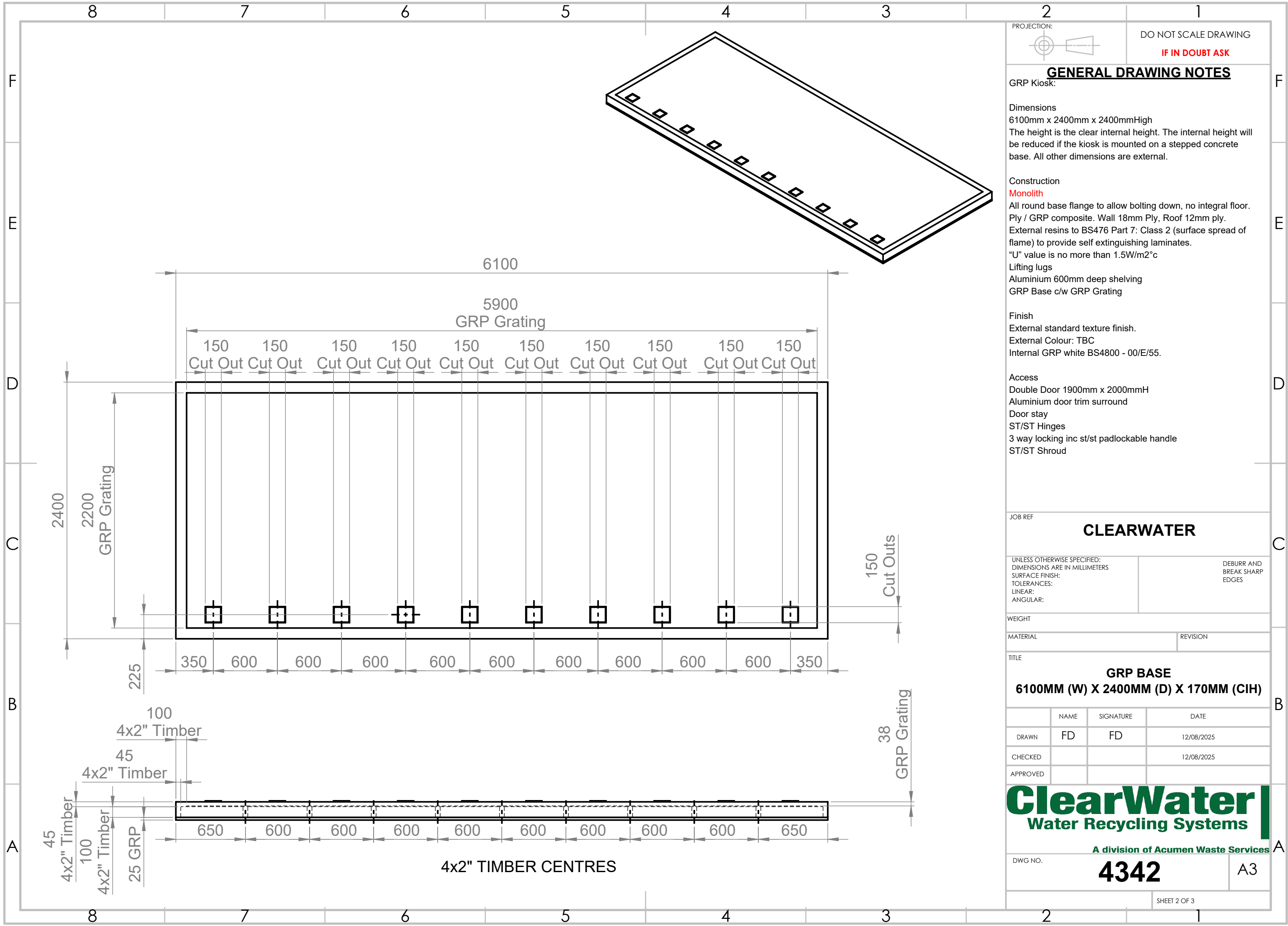
GRP KIOSK
6100MM (W) X 2400MM (D) X 2400MM (CIH)

	NAME	SIGNATURE	DATE
DRAWN	FD	FD	12/08/2025
CHECKED			12/08/2025
APPROVED			

ClearWater
Water Recycling Systems

A division of Acumen Waste Services

DWG NO.	4342	A3
---------	------	----



PROJECTION:

DO NOT SCALE DRAWING
IF IN DOUBT ASK

GENERAL DRAWING NOTES

GRP Kiosk:

Dimensions
6100mm x 2400mm x 2400mmHigh
The height is the clear internal height. The internal height will be reduced if the kiosk is mounted on a stepped concrete base. All other dimensions are external.

Construction
Monolith
All round base flange to allow bolting down, no integral floor.
Ply / GRP composite. Wall 18mm Ply, Roof 12mm ply.
External resins to BS476 Part 7: Class 2 (surface spread of flame) to provide self extinguishing laminates.
"U" value is no more than 1.5W/m2°c
Lifting lugs
Aluminium 600mm deep shelving
GRP Base c/w GRP Grating

Finish
External standard texture finish.
External Colour: TBC
Internal GRP white BS4800 - 00/E/55.

Access
Double Door 1900mm x 2000mmH
Aluminium door trim surround
Door stay
ST/ST Hinges
3 way locking inc st/st padlockable handle
ST/ST Shroud

JOB REF

CLEARWATER

UNLESS OTHERWISE SPECIFIED:
DIMENSIONS ARE IN MILLIMETERS
SURFACE FINISH:
TOLERANCES:
LINEAR:
ANGULAR:

DEBURR AND
BREAK SHARP
EDGES

WEIGHT

MATERIAL

REVISION

TITLE

GRP BASE
6100MM (W) X 2400MM (D) X 170MM (CIH)

	NAME	SIGNATURE	DATE
DRAWN	FD	FD	12/08/2025
CHECKED			12/08/2025
APPROVED			

ClearWater
Water Recycling Systems

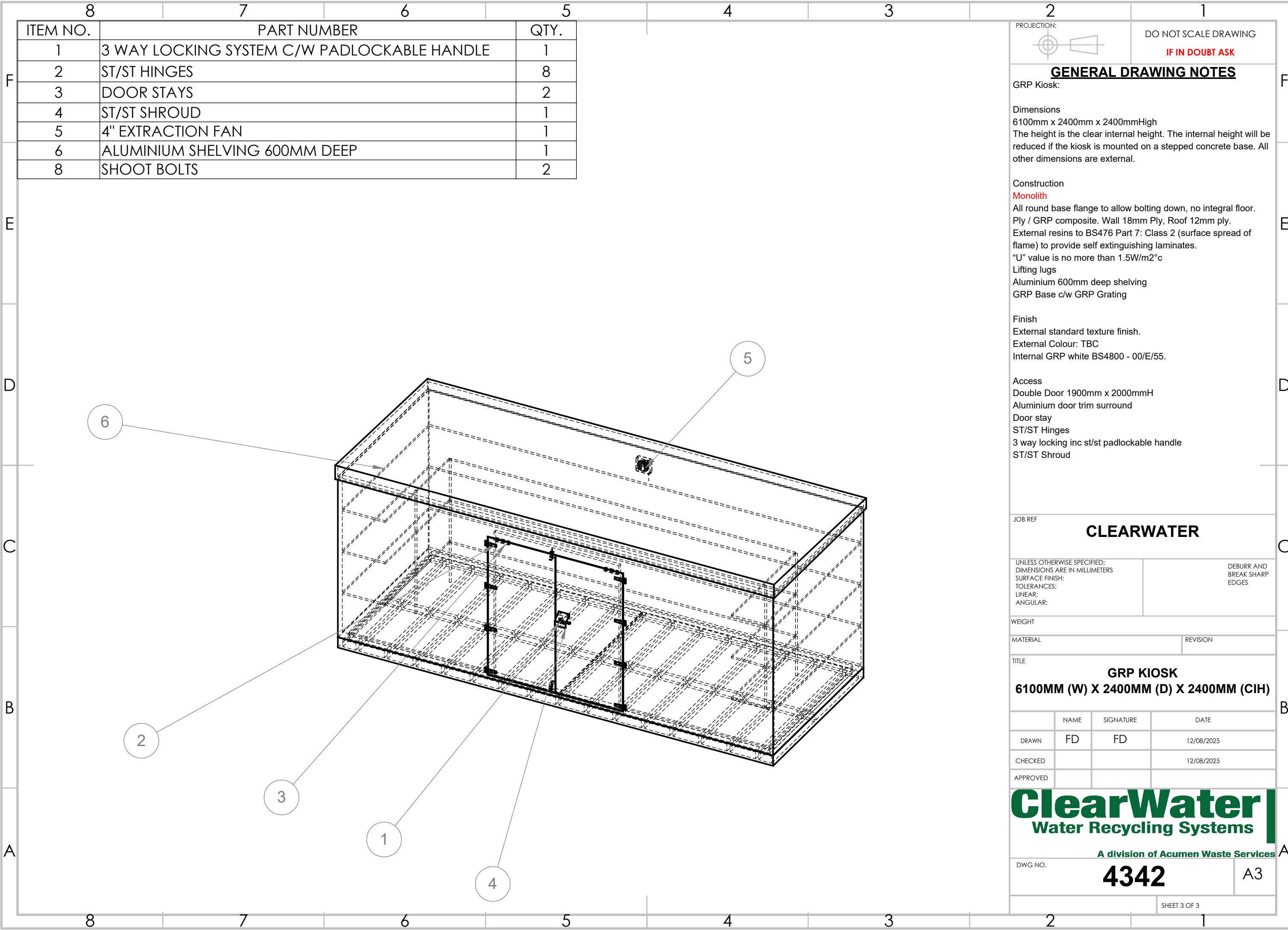
A division of Acumen Waste Services

DWG NO.

4342

A3

SHEET 2 OF 3



ITEM NO.	PART NUMBER	QTY.
1	3 WAY LOCKING SYSTEM C/W PADLOCKABLE HANDLE	1
2	ST/ST HINGES	8
3	DOOR STAYS	2
4	ST/ST SHROUD	1
5	4" EXTRACTION FAN	1
6	ALUMINIUM SHELIVING 600MM DEEP	1
8	SHOOT BOLTS	2

PROJECTION:

DO NOT SCALE DRAWING
IF IN DOUBT ASK

GENERAL DRAWING NOTES

GRP Kiosk:

Dimensions
6100mm x 2400mm x 2400mmHigh
The height is the clear internal height. The internal height will be reduced if the kiosk is mounted on a stepped concrete base. All other dimensions are external.

Construction
Monolith
All round base flange to allow bolting down, no integral floor.
Ply / GRP composite. Wall 18mm Ply, Roof 12mm ply.
External resins to BS476 Part 7: Class 2 (surface spread of flame) to provide self extinguishing laminates.
"U" value is no more than 1.5W/m2°c
Lifting lugs
Aluminium 600mm deep shelving
GRP Base c/w GRP Grating

Finish
External standard texture finish.
External Colour: TBC
Internal GRP white BS4800 - 00/E/55.

Access
Double Door 1900mm x 2000mmH
Aluminium door trim surround
Door stay
ST/ST Hinges
3 way locking inc st/st padlockable handle
ST/ST Shroud

JOB REF

CLEARWATER

UNLESS OTHERWISE SPECIFIED:
DIMENSIONS ARE IN MILLIMETERS
SURFACE FINISH:
TOLERANCES:
LINEAR:
ANGULAR:

DEBURR AND
BREAK SHARP
EDGES

WEIGHT

MATERIAL

REVISION

TITLE

GRP KIOSK
6100MM (W) X 2400MM (D) X 2400MM (CIH)

	NAME	SIGNATURE	DATE
DRAWN	FD	FD	12/08/2025
CHECKED			12/08/2025
APPROVED			

ClearWater
Water Recycling Systems
A division of Acumen Waste Services

DWG NO. 4342

A3

SHEET 3 OF 3