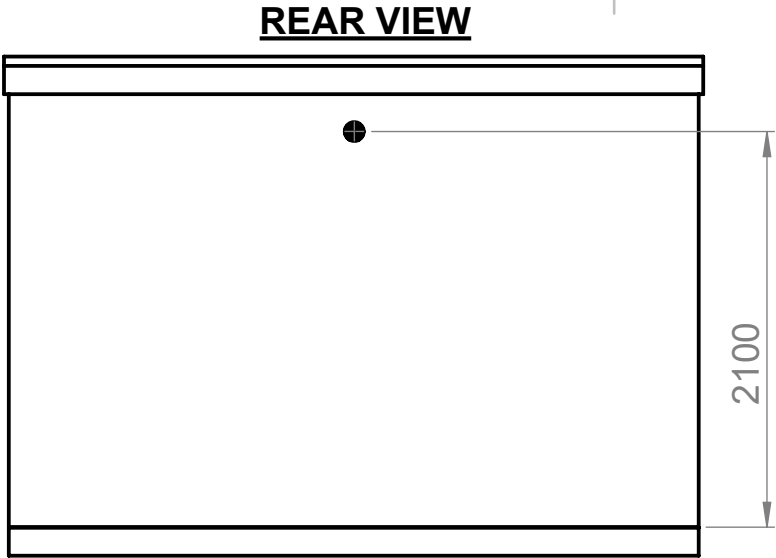
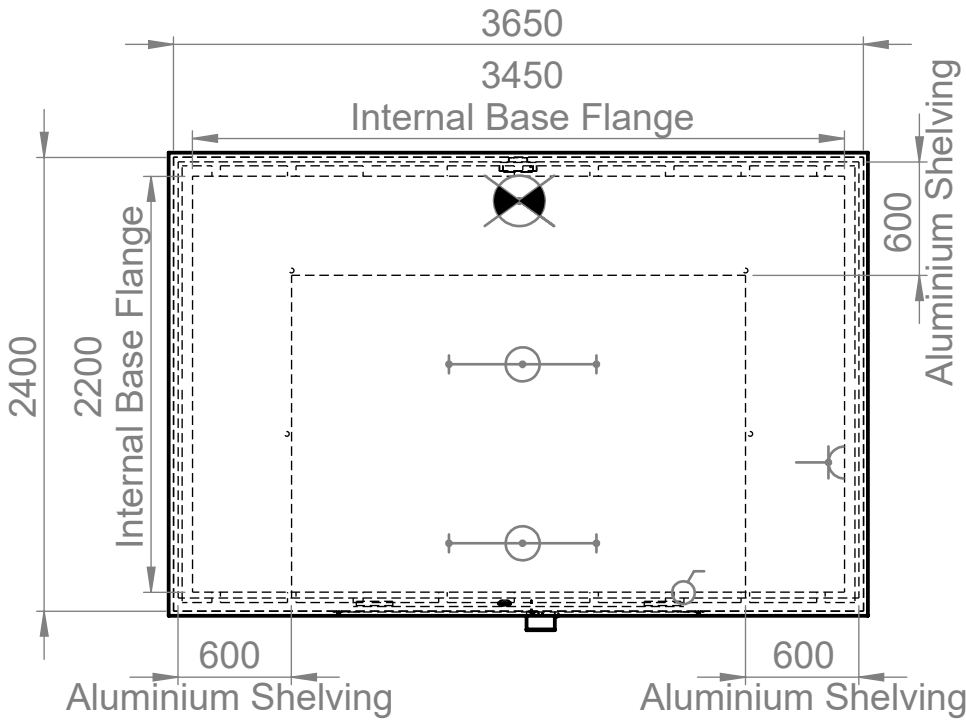


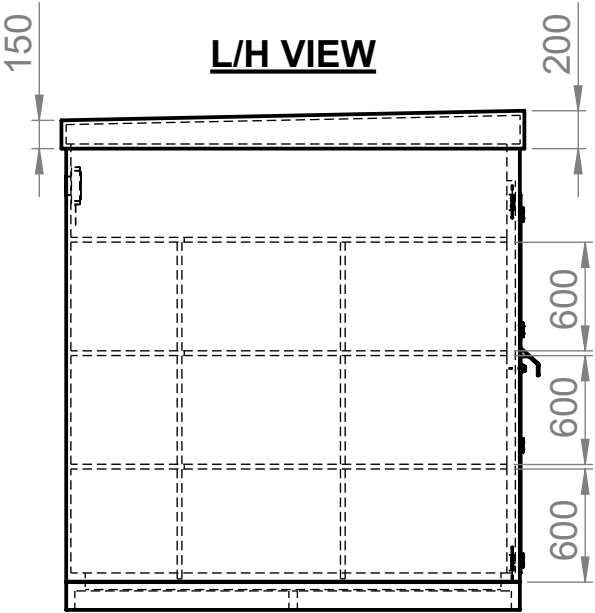
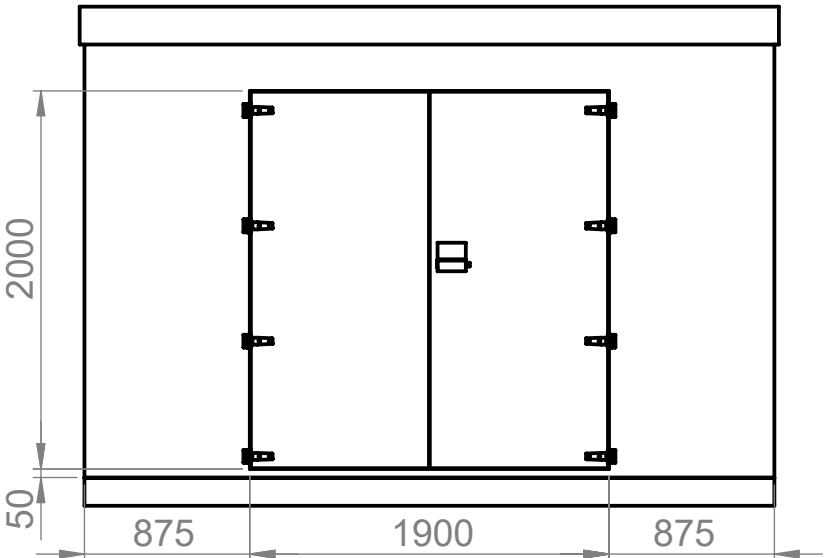
SYMBOL	DESCRIPTION	QUANTITY
	LIGHTS C/W SMASH GUARD AND MOISTURE PROOF WIRING	2
	LIGHT SWITCH	1
	4" EXTRACTOR FAN 150CFM TO RUN 24/7 FROM LIGHTING CIRCUIT	1
	16 AMP COMMANDO SOCKET TO ALLOW FOR EXTERNAL POWER SUPPLY	1



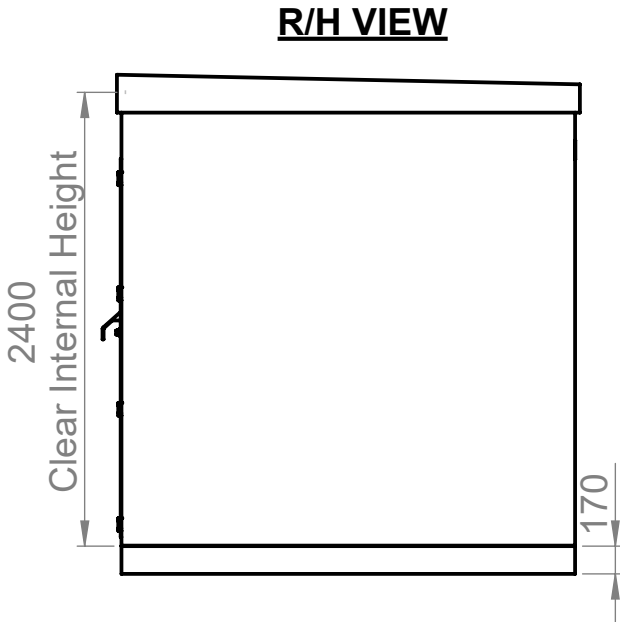
PLAN VIEW



FRONT VIEW



L/H VIEW



R/H VIEW

PROJECTION:

DO NOT SCALE DRAWING  
**IF IN DOUBT ASK**

### GENERAL DRAWING NOTES

GRP Kiosk:

Dimensions  
3650mm x 2400mm x 2400mmHigh  
The height is the clear internal height. The internal height will be reduced if the kiosk is mounted on a stepped concrete base. All other dimensions are external.

Construction  
**Monolith**  
All round base flange to allow bolting down, no integral floor.  
Ply / GRP composite. Wall 18mm Ply, Roof 12mm ply.  
External resins to BS476 Part 7: Class 2 (surface spread of flame) to provide self extinguishing laminates.  
"U" value is no more than 1.5W/m2°c  
Lifting lugs  
Aluminium 600mm deep shelving  
GRP Base c/w GRP Grating

Finish  
External standard texture finish.  
External Colour: TBC  
Internal GRP white BS4800 - 00/E/55.

Access  
Double Door 1900mm x 2000mmH  
Aluminium door trim surround  
Door stay  
ST/ST Hinges  
3 way locking inc st/st padlockable handle  
ST/ST Shroud

JOB REF

**CLEARWATER**

UNLESS OTHERWISE SPECIFIED:  
DIMENSIONS ARE IN MILLIMETERS  
SURFACE FINISH:  
TOLERANCES:  
LINEAR:  
ANGULAR:

DEBURR AND  
BREAK SHARP  
EDGES

WEIGHT

APPROX - 1250KG

MATERIAL

REVISION

TITLE

**GRP KIOSK**  
**3650MM (W) X 2400MM (D) X 2400MM (CIH)**

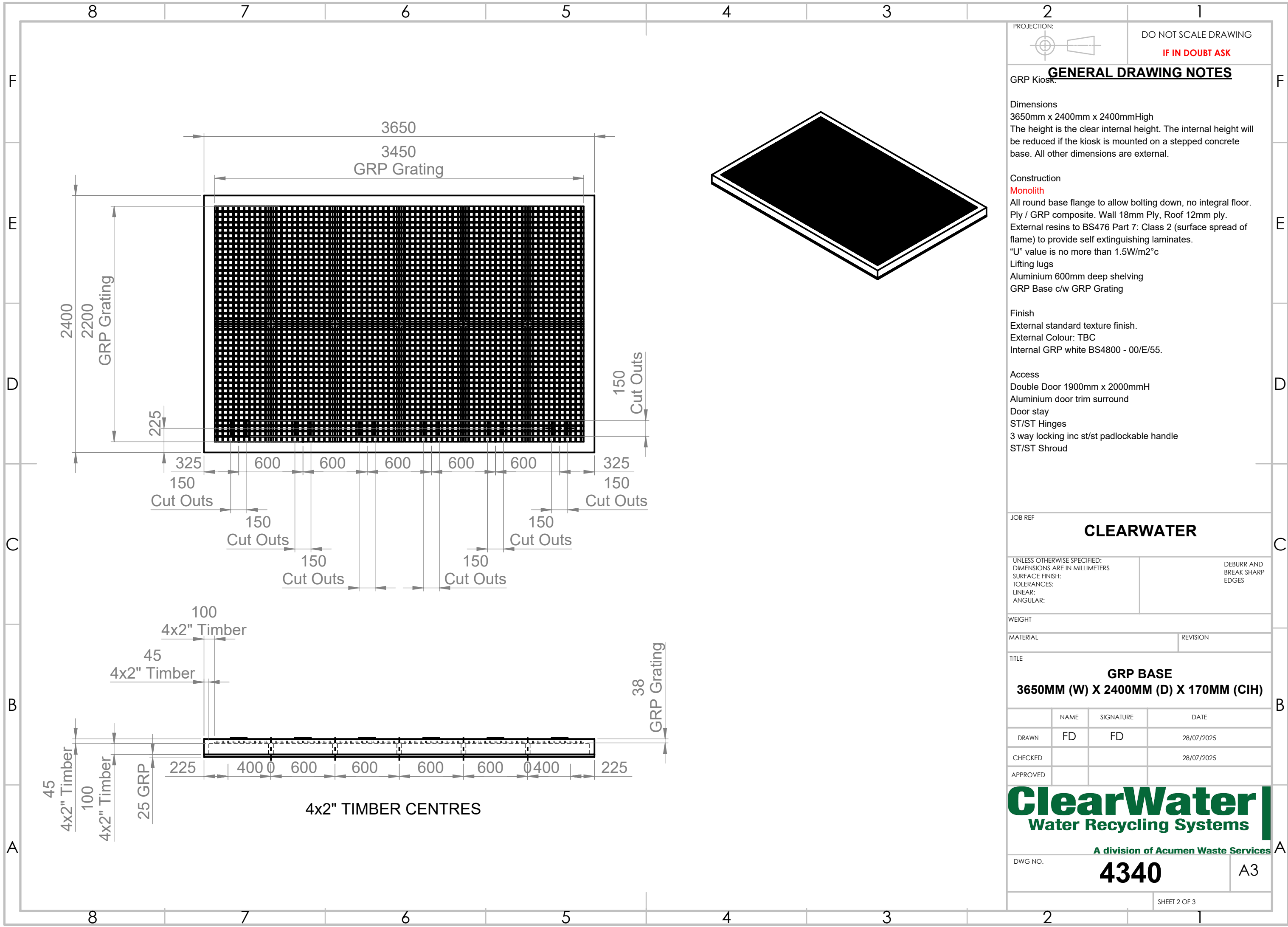
	NAME	SIGNATURE	DATE
DRAWN	FD	FD	28/07/2025
CHECKED			28/07/2025
APPROVED			


**ClearWater**  
Water Recycling Systems  
A division of Acumen Waste Services

DWG NO.  
**4340**

A3

SHEET 1 OF 3



PROJECTION:

DO NOT SCALE DRAWING  
IF IN DOUBT ASK

### GENERAL DRAWING NOTES

GRP Kiosk.

**Dimensions**  
3650mm x 2400mm x 2400mmHigh  
The height is the clear internal height. The internal height will be reduced if the kiosk is mounted on a stepped concrete base. All other dimensions are external.

**Construction**  
**Monolith**  
All round base flange to allow bolting down, no integral floor.  
Ply / GRP composite. Wall 18mm Ply, Roof 12mm ply.  
External resins to BS476 Part 7: Class 2 (surface spread of flame) to provide self extinguishing laminates.  
"U" value is no more than 1.5W/m2°c  
**Lifting lugs**  
Aluminium 600mm deep shelving  
GRP Base c/w GRP Grating

**Finish**  
External standard texture finish.  
External Colour: TBC  
Internal GRP white BS4800 - 00/E/55.

**Access**  
Double Door 1900mm x 2000mmH  
Aluminium door trim surround  
Door stay  
ST/ST Hinges  
3 way locking inc st/st padlockable handle  
ST/ST Shroud

JOB REF

**CLEARWATER**

UNLESS OTHERWISE SPECIFIED:  
DIMENSIONS ARE IN MILLIMETERS  
SURFACE FINISH:  
TOLERANCES:  
LINEAR:  
ANGULAR:

DEBURR AND  
BREAK SHARP  
EDGES

WEIGHT

MATERIAL

REVISION

TITLE

**GRP BASE**  
**3650MM (W) X 2400MM (D) X 170MM (CIH)**

	NAME	SIGNATURE	DATE
DRAWN	FD	FD	28/07/2025
CHECKED			28/07/2025
APPROVED			

**ClearWater**  
Water Recycling Systems

A division of Acumen Waste Services

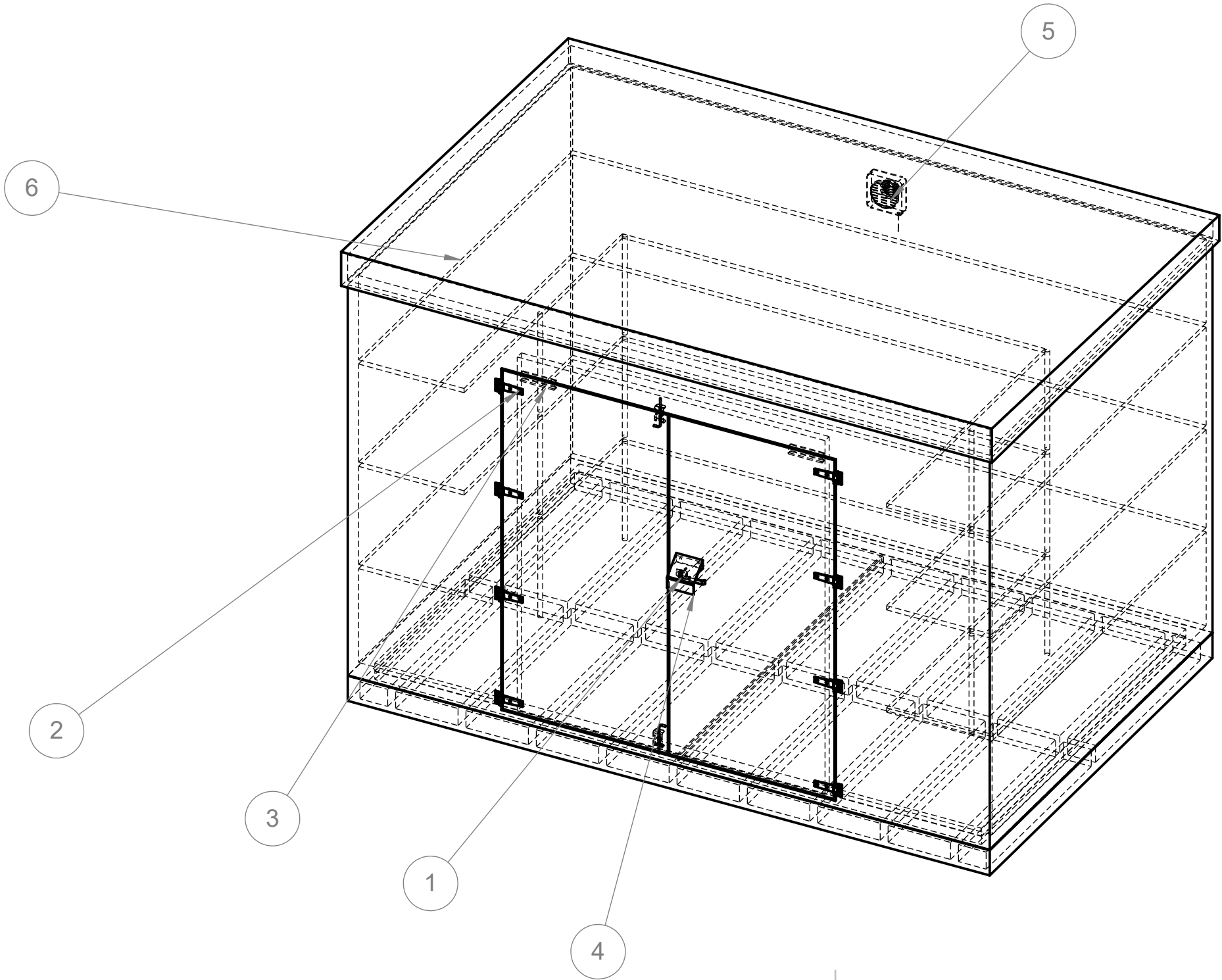
DWG NO.

**4340**

A3

SHEET 2 OF 3

ITEM NO.	PART NUMBER	QTY.
1	3 WAY LOCKING SYSTEM C/W PADLOCKABLE HANDLE	1
2	ST/ST HINGES	8
3	DOOR STAYS	2
4	ST/ST SHROUD	1
5	4" EXTRACTION FAN	1
6	ALUMINIUM SHELIVING 600MM DEEP	1
8	SHOOT BOLTS	2



PROJECTION:



DO NOT SCALE DRAWING

IF IN DOUBT ASK

**GENERAL DRAWING NOTES**

GRP Kiosk:

**Dimensions**

3650mm x 2400mm x 2400mmHigh

The height is the clear internal height. The internal height will be reduced if the kiosk is mounted on a stepped concrete base. All other dimensions are external.

**Construction**

**Monolith**

All round base flange to allow bolting down, no integral floor.

Ply / GRP composite. Wall 18mm Ply, Roof 12mm ply.

External resins to BS476 Part 7: Class 2 (surface spread of flame) to provide self extinguishing laminates.

"U" value is no more than 1.5W/m2°c

**Lifting lugs**

Aluminium 600mm deep shelving

GRP Base c/w GRP Grating

**Finish**

External standard texture finish.

External Colour: TBC

Internal GRP white BS4800 - 00/E/55.

**Access**

Double Door 1900mm x 2000mmH

Aluminium door trim surround

Door stay

ST/ST Hinges

3 way locking inc st/st padlockable handle

ST/ST Shroud

JOB REF

**CLEARWATER**

UNLESS OTHERWISE SPECIFIED:  
DIMENSIONS ARE IN MILLIMETERS  
SURFACE FINISH:  
TOLERANCES:  
LINEAR:  
ANGULAR:

DEBURR AND  
BREAK SHARP  
EDGES

WEIGHT

MATERIAL

REVISION

TITLE

**GRP KIOSK**

**3650MM (W) X 2400MM (D) X 2400MM (CIH)**

	NAME	SIGNATURE	DATE
DRAWN	FD	FD	28/07/2025
CHECKED			28/07/2025
APPROVED			

**ClearWater**  
Water Recycling Systems

A division of Acumen Waste Services

DWG NO.

**4340**

A3

SHEET 3 OF 3